



**JOSEP
CARRERAS**
Leukaemia Foundation

2020



Annual Activity Report

Registered office:

Muntaner, 383 2º.
08021 Barcelona
Tel. 93 414 55 66
info@fcarreras.es

For any queries relating to this report, please contact the
Communication Department at: comunicacio@fcarreras.es

Editing:

Josep Carreras Leukaemia Foundation

Design and layout:

aliamc@grafika.help / www.aliamccarry.com

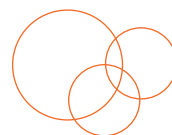
Photography:

Photographic archives

Josep Carreras Leukaemia Foundation

20 20

Annual Activity Report



**JOSEP
CARRERAS**
Leukaemia Foundation



This report can also be downloaded at:

www.fcarreras.org

Contents

About us

Josep Carreras Foundation

- 1 Mission, vision and values**
- 2 Transparency and legal compliance**
- 4 Governing bodies**
- 5 Technical team in 2020**
- 6 Financial information**
- 7 International presence**
- 8 Lines of Work**

The Different Lines of Work

10 Scientific research

Josep Carreras Leukaemia Research Institute
The Institute in numbers
The Foundation's contributions to the Institute
Research teams that joined in 2020

16 The Bone Marrow Donors Registry

What Is REDMO?
Activities in 2020
REDMO's global activities

28 Patient guidance

31 Welfare flats

The UNSTOPPABLE community

34 Campaigns

37 Our online community

40 Our members and friends

44 Inheritances and bequests

46 Supporting companies

53 Charitable initiatives

58 Buyers of our charity products: our charity shop

A letter from the president



Dear friends,

2020 has been a difficult year for everyone. The COVID-19 health crisis turned our lives upside down and forced us to adapt to a new reality.

Here at the Josep Carreras Foundation, however, we have continued working with the same perseverance and will to succeed, although the unprecedented situation has given rise to significant changes in our activity.

The Josep Carreras Leukaemia Foundation was created in 1988 with the aim of helping to find a definitive cure for this disease. The Foundation's efforts focus on four basic areas: scientific research, which is carried out at the Josep Carreras Leukaemia Research Institute, management of REDMO in Spain, patient guidance and our welfare flats programme.

This report includes the new research groups that have joined the Josep Carreras Leukaemia Research Institute in 2020, which currently has more than 35 scientific research groups.

Our REDMO programme has also carried on doing a commendable job, despite the fact that 80% of the existing work procedures had to be adapted to the ever-changing context. REDMO overcame all difficulties to carry out 1,034 donor search activations for Spanish patients, thereby surpassing 1,000 processes in one year for the very first time, 6% more than in 2019. As if that were not enough, 93% of the donors were identified in less than two months, with an average of 26 days from the start of the search.

The pages of this 2020 Annual Activity Report also contain information on the welfare flats programme, which enabled us to accommodate 48 families throughout the year, and on our patient guidance. With respect to the latter, the Foundation handled 1,521 online medical consultations and a further 4,334 general information requests.

To conclude, I would like to make special mention of the UNSTOPPABLE community against leukaemia.

I am referring to all our partners and collaborators, the companies that have joined our cause, the people who decided to leave us an inheritance or bequest and everyone else who has organized an event for the benefit of our entity.

Each and every one of these actions will help us continue with our vision: to ensure that leukaemia one day becomes a curable disease in each and every case.

Thanks for making us UNSTOPPABLE.

Warm regards,

Josep Carreras, President.

A woman with a joyful expression is shown in profile, looking upwards and to the left. She is wearing a dark-colored top with a white polka-dot pattern. Her hands are positioned in front of her chest, with her fingers interlaced to form a heart shape. The entire image is overlaid with a semi-transparent teal or cyan color, creating a monochromatic effect.

About us



Thousands of people around the world become ill with leukaemia every year. The Josep Carreras Leukaemia Foundation was founded in 1988 with the aim of finding a definitive cure for this disease and improving the quality of life of patients.

Having recovered from his illness, Josep Carreras created the Foundation as a way of acknowledging science and expressing his gratitude for the many kind gestures he received.

Mission, vision and values



MISSION. To work towards constantly increasing our social base, prioritizing our efforts in scientific research and strengthening our current lines of work.



VISIÓN. To ensure that leukaemia one day becomes a 100% curable disease in each and every case.



VALUES. Independence, rigour and transparency, commitment, support for scientific research, constant contact with our founder and president, Josep Carreras, and warm, personalized responses to the inquiries we receive.

Transparency and legal compliance

Corporate governance

We have defined our mission, vision and values, which are reinforced by strict adherence to the codes of ethics, good governance, conduct and financial investments, approved by the Board of Trustees.

We monitor and demonstrate fulfilment of our commitments through reports, controls and indicators to give a clear, detailed and transparent account of the way we use the funds entrusted to us by our supporters.



Key actions in 2020:

- Revision of the Collaborators' Code of Conduct to include a clause on access to email and a commitment from all staff.
- The corporate governance report, which detailed all activities carried out: meetings of the Board of Trustees, meetings of the Delegate Committee, meetings between members of the Board of Trustees and the management team, institutional relations with the Government of Catalonia, the Ministry of Health and universities, and participation in national commissions (the National Transplant Organization and the Quality Certification Body in Transfusion and Cell and Tissue Therapy) and in international working groups (the World Marrow Donor Association), to name the most prominent.
- Appointment of Júlia Carreras as a new member of the Board of Trustees.
- Agreement with the Government of Andorra and the Ministry of Health to promote donation in the principality and manage the data through the Bone Marrow Donors Registry (REDMO). Donor registration has been carried out through an online platform of the Josep Carreras Foundation - REDMO since March 2020.

Legal compliance

The Josep Carreras Foundation and the REDMO programme have the manuals, processes and resources required to demonstrate compliance with the laws and regulations that apply to us, including those relating to the prevention of penal risk and money laundering, and data protection.

The Legal Compliance Officer, together with the members of the Legal Compliance Committee, the Data Protection Officer and the members of the Operations Unit, is responsible for promoting and verifying the strictest compliance with the regulations and for ensuring that all the Foundation's members and associates are aware of them.



In 2020, the following accreditations and documents remained in force and were renewed:

- Framework agreement with the Ministry of Health for the management of REDMO.
- Authorization granted by the Government of Catalonia to REDMO as a tissue establishment in accordance with Spanish legislation.
- Data protection audit conducted by Faura-Casas.
- Annual accounts audit conducted by the company Acordia ACR.
- Revision of the Penal Risk Manual.
- Revision of the Security Document.
- Revision of the Money-Laundering Prevention Manual.
- Accreditation of the website by the Medical Association of Barcelona and Health on the Net (HONcode).
- REDMO qualification from the World Marrow Donor Association.

Quality control systems

We follow the requirements defined in a quality control system based on the ISO 9001:2015 standard, whose aim is to continuously improve our work and achieve an impact on results.



In 2020:

- The quality system audit was not carried out, since all staff members have been teleworking since March due to the pandemic.
- Revision and updating of the quality system documentation: manuals, process map, procedures, protocols, etc.
- Updating of the contingency plan.
- Implementation of a new management system (A3ERP). Updating of the strategic plan.
- Implementation of Power BI.
- Updating of the Dossier of System Process Indicators, which reflects our activity and impact.

Governing bodies



The Board of Trustees is the managing body whose role is to ensure compliance with the founding aim, in addition to guaranteeing that the Foundation's assets are correctly administered.

(*) Members of the Delegate Committee.

Board of Trustees

President

H.E. Josep Carreras Coll*

Vice-president

Prof. Evarist Feliu*

Treasurer

Albert Carreras Coll*

Members

Júlia Carreras

Dr. Rainer Storb

Marcel Pascual*

Arcadi Calzada

Albert Carreras Pérez*

Prof. Jordi Sierra*

Prof. Álvaro Urbano*

Lluís Bassat

Joan Uriach

Joaquim Folch

Alberto Collado

Secretary

Calixto Mut

Permanent invitees to the Board of Trustees and Delegate Committee

Manager

Antoni Garcia Prat

Director of REDMO

Dr. Enric Carreras

Recording secretary of the Delegate Committee

Virginia Ensesa

Legal Compliance Officer

Prof. Rafael Jiménez de Parga

Legal Compliance Committee

Prof. Evarist Feliu

Albert Carreras Coll

Antoni Garcia Prat

Dr. Enric Carreras

Secretary

Anna Giner

Data Protection Officer

Iris Bargalló

Money-Laundering

Prevention Operations Unit

Antoni Garcia Prat

Albertina Grau

Anna Giner

Board of Honour

Former Vice-president and co-founder

Prof. Ciril Rozman Borstnar

Technical team in 2020

Manager

Sr. Antoni Garcia Prat

Scientific Director

Prof. Evarist Feliu

General Secretary

Adriana Bararu

Bone Marrow Donors Registry (REDMO)

Director

Dr. Enric Carreras

Assistant Director

Dra. Juliana Villa

Institutional Coordinator

Núria Marieges

Technical Coordinator

Cristina Fusté

Accounting

Carolina Salillas

Raissa Dardet

Donor Dept

Cristina Bueno

Núria Giménez

Serrat Marieges

Umbilical Cord

Blood Dept

Montse Rebagliato

Workups Dept

Cecilia Montesinos

Mariam Pérez

Isabel Monteagudo

Jordi Martínez

Patient Dept

Ana Montesinos

Clara Rosés

Mavi Díaz

Ana Pertusa

Emma Montenegro

Marketing

Members and

Member Retention

Albertina Grau

Anna Grau

Esther Soto

Mireia Bel

Vanessa Iglesias

Inheritances and bequests

Albertina Grau

Corporate Partnerships

Regina Díez

Charitable Initiatives

Regina Díez

Clàudia Nogués

Frank Pérez

Marta Giménez

Online Shop and Products

Clàudia Nogués

Regina Díez

Quality and Legal Compliance

Anna Giner

Community Manager

Inés Martí Fabra

E-Marketing and

Patient Experience

Alexandra Carpentier

de Changy

Institutional Communication

Marta Fernández

Others

Welfare Flats

Esther Soto

Customer Care

Maite Santiago

IT

Mario Gran

Gerard Leris

Legal Compliance Officer

Rafael Jiménez de Parga

Data Protection Officer

Iris Bargalló

Financial information



Source of funds in the 2020 financial year

Financial income	€57,032.26
Donations and other income	€610,575.04
Donations from partners	€12,755,309.04
Income from the search for hematopoietic progenitors* for foreign patients	€4,318,628.37
Income from the search for hematopoietic progenitors* for Spanish patients	€10,889,972.06
Charged to reserves for Institute financing and investment	€6,572,925.48
Other	€40,308.97
Total	€35,244,751.22

(*) Bone marrow, peripheral blood and umbilical cord blood.



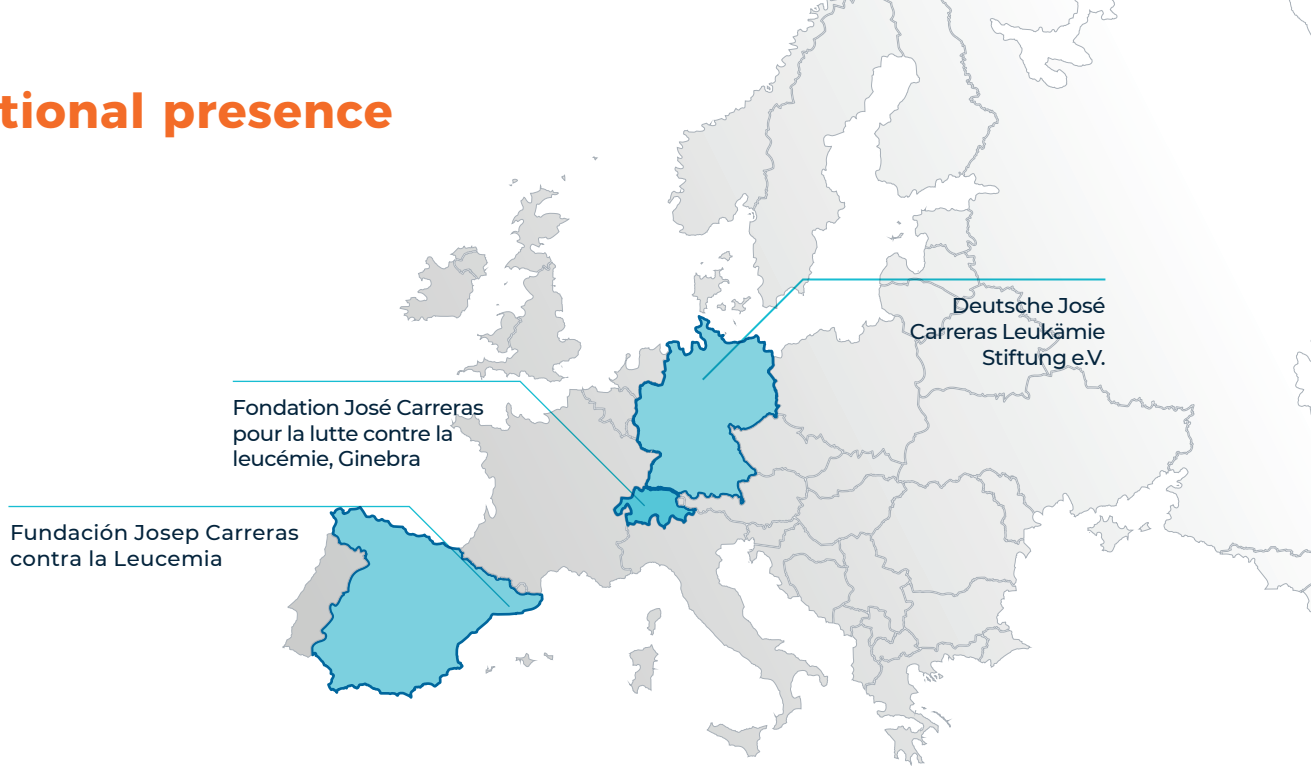
Destination of funds in the 2020 financial year

Awareness raising	€979,646.24
Payment to reserves for the construction and fitting out of the Josep Carreras Leukaemia Research Institute	€7,355,754.12
Administration and fundraising	€2,348,973.57
Structure of REDMO	€3,217,549.40
Expenditure on the search for hematopoietic progenitors* for foreign patients	€3,725,998.38
Expenditure on the search for hematopoietic progenitors* for Spanish patients	€9,952,010.36
Support for scientific research and other teaching and social service programmes	€7,664,819.16
Total	€35.244.751,22

(*) Bone marrow, peripheral blood and umbilical cord blood.

You can access our annual accounts at the website www.fcarreras.org

International presence



The Josep Carreras / E. D. Thomas Endowed Chair for Cancer Research

The Friends of José Carreras International Leukaemia Foundation agreed to its dissolution and to use the funds, more than one million dollars, to create a professorship among the members of the clinical research division at the Fred Hutchinson Cancer Research Center (Hutch) in Seattle, for five-year tenure periods.

In 2018 this professorship was awarded to Dr. Geoffrey Hill, a world-renowned haematologist from Brisbane, Australia. Dr. Hill is also director of the Hutch Haematopoietic Cell Transplant Programme.

Fondation José Carreras pour la lutte contre la leucémie, Ginebra

The Josep Carreras Foundation runs a high-resolution typing programme in Switzerland for umbilical cord blood units recorded in the Swiss registry and available to any patient in the world.

1 Case Postale 85, CH
1217 Meyrin 2, Switzerland

Deutsche José Carreras Leukämie Stiftung e.V.

The more than 220 million euros raised throughout the 26 editions of the television gala in the fight against leukaemia and the generosity of German donors enabled the Josep Carreras Foundation in Germany to finance 1,335 projects, 813 of which corresponded to research scholarships and grants, 65 to the creation and expansion of healthcare and research facilities, 123 to small projects and 334 to social issues and aid for patient and family associations.

Elisabethstraße 23,
80796 Munich, Germany
Telephone: (+49) 89 272 9040
Fax: (+49) 89 272 9044
www.carreras-stiftung.de

Fundación Josep Carreras contra la Leucemia

Muntaner, 383, 2° 08021 Barcelona, Spain
Telephone: (+34) 93 414 55 66
Fax: (+34) 93 201 05 88
www.fcarreras.org

The different lines of work



SCIENTIFIC RESEARCH

The Josep Carreras
Leukaemia Research Institute.



REDMO

Bone Marrow
Donors Registry.



PATIENT GUIDANCE

In 2019, **1,521** online medical consultations and a further **4,334** general information requests were handled.



WELFARE FLATS

In 2019, we accommodated **48** families, who spent a total of **1,504** days in our flats.



The different
lines of work

Scientific research

Josep Carreras Leukaemia Research Institute.



We use the most innovative technology, collaborate in many multi-centre projects and successfully compete on a national and international level.

Find out more about the Josep Carreras Institute and its different research groups at:

www.carrerasresearch.org/en



Josep Carreras
LEUKAEMIA
Research Institute

The Josep Carreras Leukaemia Research Institute, a Government of Catalonia CERCA research centre, was founded in 2010 by the Catalan government and the Josep Carreras Leukaemia Foundation with the aim of strengthening biomedical research and personalized medicine in the field of leukaemia and other malignant blood diseases.

The Institute is unprecedented in that it brings together the efforts and rigour of world-class basic and clinical researchers. It employs the most innovative technologies, collaborates on many multi-centre projects and competes successfully on both a national and international level. Its scientific output is already considerable (more than 1,100 publications) and highly relevant. Its scientific articles have been published in the most prestigious international journals.

The Josep Carreras Institute has **three independent but coordinated scientific campuses**: the **Clínic-UB Campus**, located within the research facilities of Hospital Clínic in Barcelona and its University of Barcelona Faculty of Medicine research institute, IDIBAPS; the **ICO-Germans Trias i Pujol-UAB Campus**, located near the Germans Trias i Pujol University Hospital in Badalona and its research foundation, and at the UAB Germans Trias i Pujol Teaching Department; and the **Sant Pau-UAB Campus**, located in the healthcare complex of the Hospital de la Santa Creu i Sant Pau, the UAB Sant Pau Teaching Department and its research institute, IIB Sant Pau.

Work is currently under way to create two new campuses: the **ICO-IDIBGI Campus** and the **Mar Campus**.

The Institute in numbers

Publications in 2020

1721.077

Impact factor

These figures are provisional, given that some articles take three or four months to be published and the 2020 impact factor is not published until the summer of 2021.



227

Indexed publications



125

Publications in the first quartile

The team in 2020



266

Researchers



37

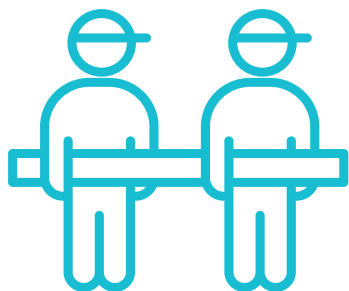
Research groups



31

Management personnel

The Foundation's contributions to the Institute



In 2020, the **Josep Carreras Foundation** contributed to the **Josep Carreras Leukaemia Research Institute** in a number of different ways:

Subsidies for running costs:

Contribution to finance the costs of running the buildings on the different campuses:

€870,000

Funding and investments:

Contribution for the acquisition of books, equipment and technology that remains the property of the Institute:

€3,467,489.99

Support for research:

Contribution for funding specific projects. Funds are awarded to the different research teams based on their proposals and the criteria of the Institute's management team:

€2,424,467.98



**Research teams
that joined
in 2020**

CANCER IMMUNOGENOMICS

Principal investigator:

Dr. Eduard Porta

Eduard Porta's group uses computational approaches to study the interaction between genetic variants of cancer and multiple aspects of the disease, ranging from the immune response against tumours to the susceptibility of cancer cells to different treatments.

To achieve this, they use big data obtained from patient samples and analyse three main factors:

- Germline variants, which are genetic variations we inherit from our parents.
- Somatic variants, which are mutations that occur after conception.
- The tumour microenvironment, in other words, the environment surrounding a tumour.

Their main objective is to understand how these three major factors interact with each other in cancer.

In recent years, they have developed several computational tools to identify what mutations drive the transformation of healthy cells into malignant ones. To that end, they combine data from protein structures with the mutations of over 10.000 cancer genomes.

They have also shown that there is a relationship between the mutations that drive oncogenesis and how the patient's immune system responds to it.

More recently, they have focused their efforts on deciphering the role of inherited genetic variations in cancer predisposition and immuno-oncology by studying the genetic profiles and medical records of over a million patients.

LEUKAEMIA AND IMMUNO-ONCOLOGY

Principal investigator:

Dr. Laura Belver

Dr. Laura Belver's group focuses its research on **juvenile myelomonocytic leukaemia**, a type of childhood leukaemia that affects very young children and is extremely rare (fewer than 10 cases a year in Spain). Haematopoietic stem cell transplantation is currently the only available treatment for those patients. However, this treatment involves significant risks for patients; approximately 30% relapse after the transplant.

The objective of their research focuses on two fundamental aspects:

- Finding new genetic mutations in noncoding regions of DNA (regions that are not genes, but that regulate genes) to see how they affect tumour progression. This will be the first time this type of analysis has been performed in juvenile myelomonocytic leukaemia and will improve the ability to classify patients and predict how they will progress.

- Designing inhibitors to block the adverse effects of the PTPN11 gene mutation, which is present in 40% of patients and is associated with poor disease progression. This will make it possible to treat children with the most aggressive forms of leukaemia in a safe, very specific way.



**Research teams
that joined
in 2020**



CANCER HETEROGENEITY AND HIERARCHIES

Principal investigator:
Dr. Verónica Rodilla

EDr. Verónica Rodilla's group researches cellular hierarchies and tumour heterogeneity. To achieve this, they identify the cells that express a certain gene and observe the cells that come from them, thereby making it possible to trace the lineage of all descendants and study the characteristics that perpetuate the tumour.

As we age, we accumulate mutations, some of which can cause the cell to become "trapped" in the cell cycle without being able to divide, thus entering a state called senescence. These senescent cells express many factors that allow the immune system to find and eliminate them.

However, the immune system also ages and stops recognizing these cells, which keep accumulating in our body. There are many pathologies associated with age, including cancer, and the accumulation of senescent cells is consistently evident in most of them.

Dr. Rodilla's group aims to investigate the role of senescent cells during cancer treatment. Many current chemotherapies can induce senescence in both the tumour and the tissue that surrounds it. One of the objectives of this research group is to ascertain whether eliminating these cells would benefit patients.

Their research uses a combination of different models (cells in culture, 3D models, etc.) to better understand tumour heterogeneity.

Their mission is to help improve cancer patients' treatment of choice by searching for novel therapeutic strategies.



To find out more about the Josep Carreras Institute's research groups, go to the website:

www.carrerasresearch.org

Bone Marrow Donors Registry

What is REDMO?



REDMO is Spain's only official programme entrusted with managing the database of Spanish volunteer donors.

Often, the only chance of a cure for many people with leukaemia and other malignant blood diseases is a bone marrow, peripheral blood or umbilical cord blood transplant (haematopoietic progenitors).

However, three out of every four patients do not have a compatible donor in their family.

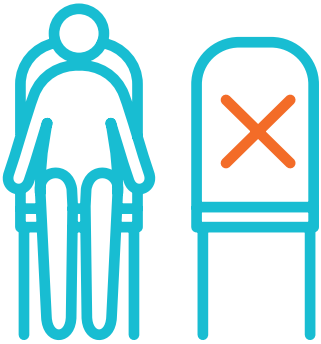
For that reason, the Josep Carreras Foundation created the Bone Marrow Donors Registry (REDMO) in 1991, with the aim of enabling patients without a compatible donor to obtain bone marrow from an unrelated voluntary donor.

It became fully operational in 1994 when it was incorporated into the public health system with the signing of the first framework agreement between the Josep Carreras Foundation and the Ministry of Health, through the National Transplant Organization.

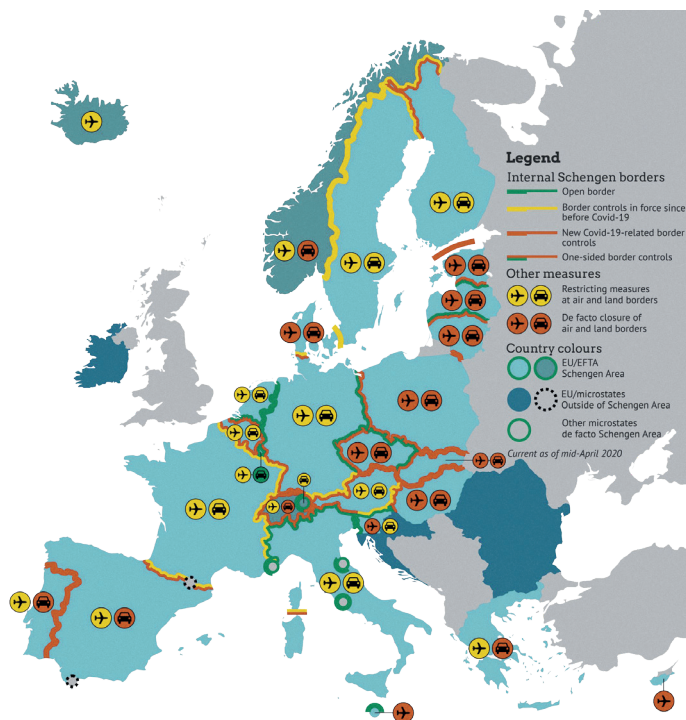
REDMO is Spain's only official programme entrusted with managing the database of Spanish volunteer donors (data that is received directly from the Autonomous Communities), searching for compatible donors for Spanish patients and coordinating the transport of bone marrow, peripheral blood or umbilical cord blood from the donation site to the transplant centre.

REDMO also receives requests from foreign registries in other countries to search for Spanish donors who are compatible with foreign patients.

REDMO. Activities in 2020.



2020 was a year marked by the pandemic. The SARS-CoV-2 virus brought the world to a standstill in March/April.



This map shows the status of the borders in Europe; the situation in the rest of the world wasn't much better, and was even worse in some countries. According to information from the International Air Transport Association (IATA), domestic flights in North America, Europe and Australia fell by 53%, in Asia by 55%, in South America by 57% and in Africa by 58%.

Border closures and the cancellation of both domestic and international flights created two major problems for registries: travel was disrupted for donors and patients and the products being transported by couriers were subject to constant delays and changes, which implied a high risk of deterioration of the cells destined for patients.

Couriers always carry documentation certifying the products they are transporting and the conditions under which they must do so. Because of the pandemic, this documentation underwent constant changes, according to each country's internal regulations, and this meant that our registry was forced to constantly adapt to all the new regulations.

How did this affect registries worldwide? In June, the World Marrow Donor Association (WMDA) conducted a survey in which 71 different registries participated.

REDMO. How the different departments were affected



Of the 71 responses obtained, the following stood out:

- **5,4%** of the registries had to stop operating completely at some point (although REDMO did not stop operating at any time).
- **4,2%** of the registries mislaid products due to problems and delays in shipments (REDMO did not lose any products).
- **17,4%** of the registries reported that they were not able to infuse all products received.
- **18,6%** of the registries had difficulties with the cryopreservation (freezing) of the products.

In Spain, the state of alarm was announced on 15 March. REDMO had already begun preparing the entire organization for teleworking, an arrangement that began on 16 March and has remained in place ever since, and managed to resolve all the technical and personnel challenges this entailed.

Since this arrangement began, REDMO's major challenge has been to adapt 80% of its procedures to the constant changes stemming from the pandemic.



Transport

To ensure that the products were properly transported, safe conducts were issued for entry into the country. In addition, from March to June, people were sent to the airport by transplant centres to collect products and prevent couriers

from entering the country, a procedure that was made possible thanks to the coordination between REDMO, the National Transplant Organization and the airport Civil Guard. Furthermore, since November of last year, all couriers have been required to provide a negative PCR test a maximum of 72 hours before entering the country.

Since the beginning of the pandemic, logistics problems associated with transportation have represented the biggest challenge we have had to face, since flights were continuously changed and donations cancelled due to coordination problems. This meant that all documentation required for the transport of these products had to be updated constantly and urgently.



Products received

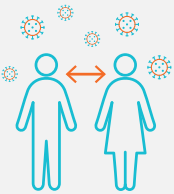
Given the difficulties with collection and transplant centres, transport bottlenecks (for both couriers and donors) and, finally, the risk of contagion by SARS-CoV-2 among donors, it was initially decided that all products received in transplant centres would be cryopreserved and that preparation treatment of patients would not start until the products' suitability was confirmed.

This resulted in a failure to infuse certain products. In some cases, this was due to the treatment itself and the patient's evolution while, in others, it was due to problems derived from the processing of the product.



Donor department

During lockdown (from March to June), the decision was made to prevent donors from travelling to donation centres. This meant that the collection of blood samples to test for donors' compatibility had to be replaced by a medical questionnaire, an extended version of the existing questionnaire, to ascertain the donor's personal and clinical availability and his or her COVID-19 risk. Compatibility tests were performed at a later date, during the predonation visit.



Patient department

The search management process was completely disrupted by the different procedures of each registry (the shipping of blood or saliva samples or the completion of a medical questionnaire).

In addition to the transport-related problems that affected the management of haematopoietic progenitors from donors, it also became necessary to freeze them. At first, this cryopreservation was carried out when the product arrived at the transplant centre, but logistical problems meant that it sometimes had to be carried out at the collection centre or halfway between the two centres. This required that frozen products be shipped (a process similar to that of shipping a cord blood unit).



Work ups department

Apart from the above-mentioned transport problems, the department's biggest problem related to donor travel. During lockdown, finding suitable transport and accommodation for them was very difficult.

This was further complicated by the need to carry out COVID-19 PCR tests on donors prior to donation to reduce the risk to donors and the collection team.

Moreover, the logistical problems also affected some donations between family members. Despite this, the number of transplants involving relatives was exceptional, given that donors were unable to travel to the country in which their ill relatives were located.

In spite of all this, these are the results of REDMO's activity in 2020:

Evolution of the number of available bone marrow donors in Spain (1994-2020)

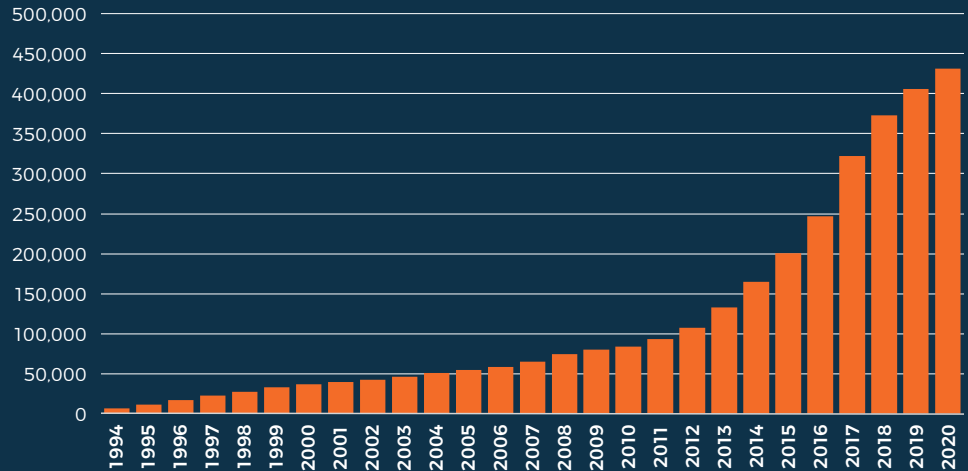


431,703

available donors
(6% rise in 2020)

30,631

donors characterized in 2020

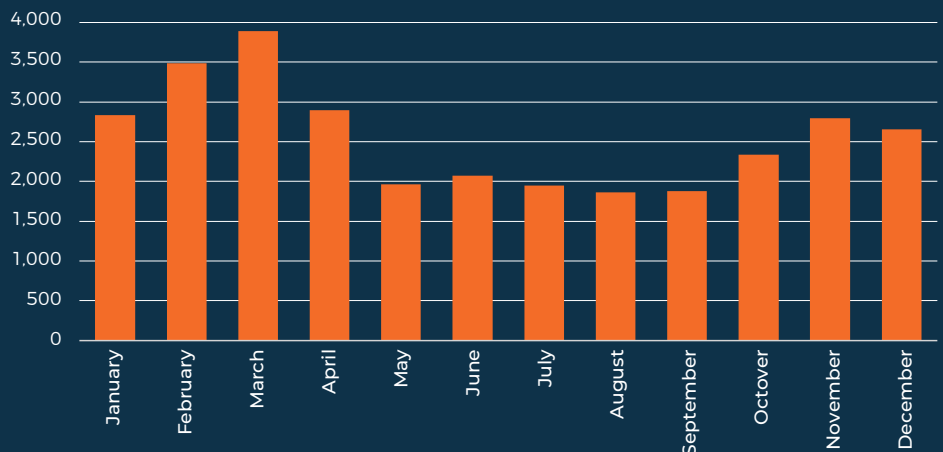


It is clear that there has been a significant rise in the number of registered donors in recent years. However, it is important to keep in mind that the number of donors registered with REDMO does not always match the number of registered donors provided by the National Transplant Organization or the autonomous communities. This is because, even when donors are registered, they cannot be transferred to REDMO and included in the international donor network until their human leukocyte antigen (HLA) study, signed informed consent form and the minimum details established by the National Bone Marrow Donation Plan have been received.

Donors incorporated by month

Donor recruitment during the pandemic has been affected by **the disruption to the recruitment centres' healthcare activities and the restrictions on donor mobility.**

The graph showing the number of donors incorporated by month clearly reflects the impact of the two COVID-19 waves that occurred in 2020.





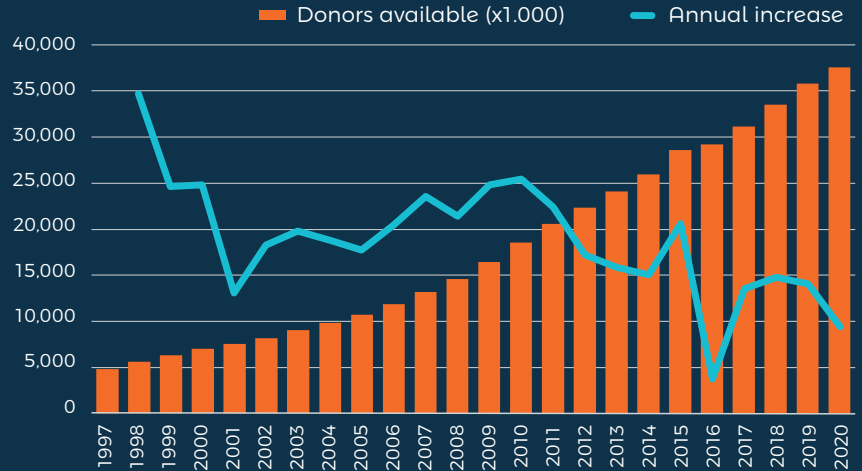
REDMO's activity in 2020.
Bone marrow donors

Spain is still ranked 13th in the world and 6th in Europe



37,558,025

number of donors in the world



requests for collection of haematopoietic progenitors from Spanish donors



319

requests received

(48% national; 52% international)



220

collections made

(27 from requests received in 2019)



111

cancelled before extraction

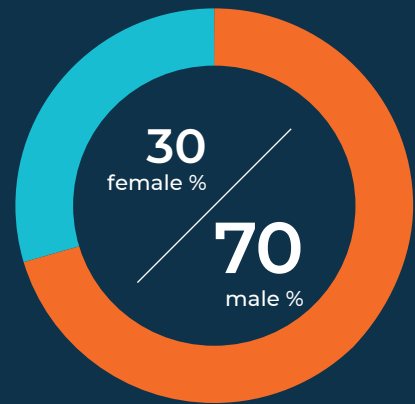
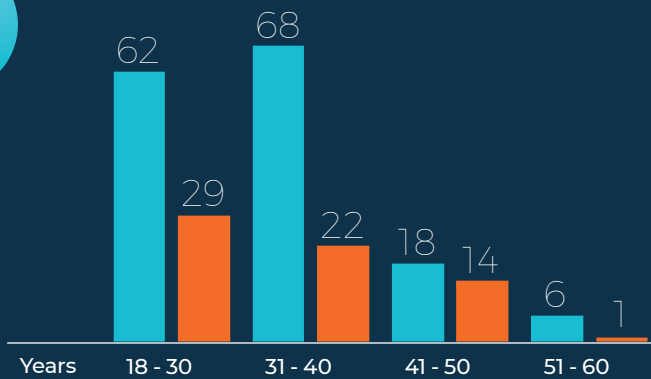


19

collections under way

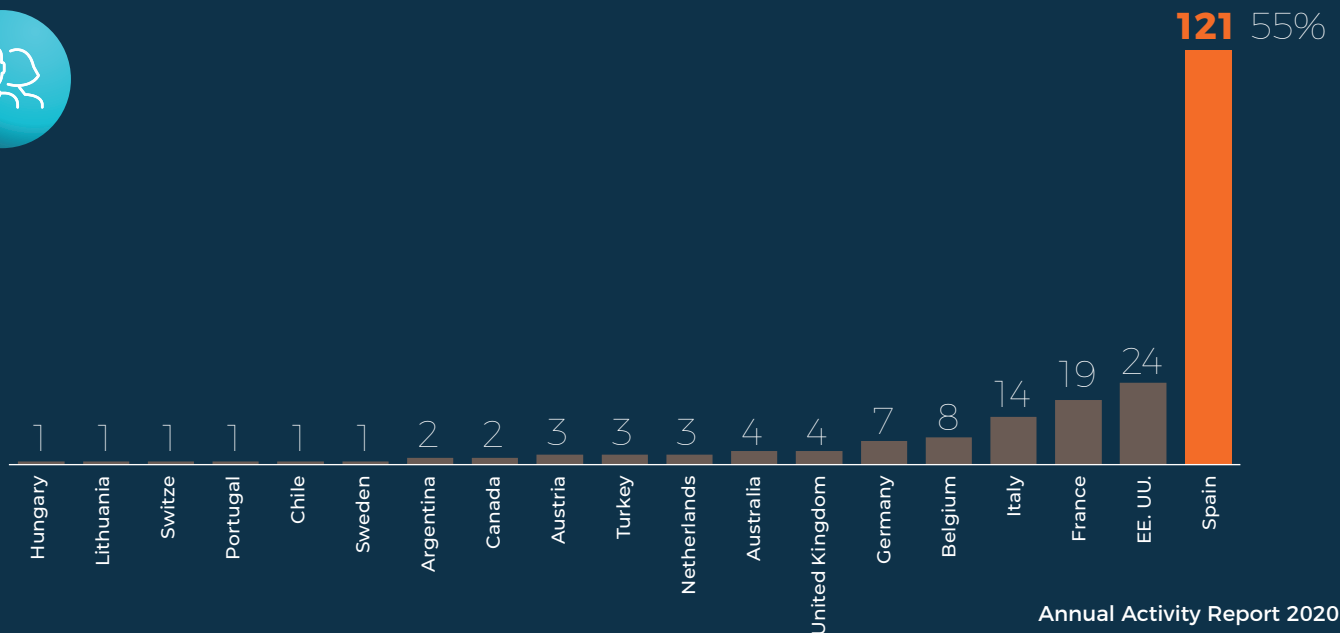
7.39 out of every 10,000 active donors donate

Profile of effective donors



Among donors, the profile of those who donate still differs from the profile of available donors. When selecting donors, it is important to seek out young men if any are available, as reflected in these graphs. But the truth is that 65% of donors are women and just 53% are under 40 years of age.

Evolution of collections, according to destination (n=220)





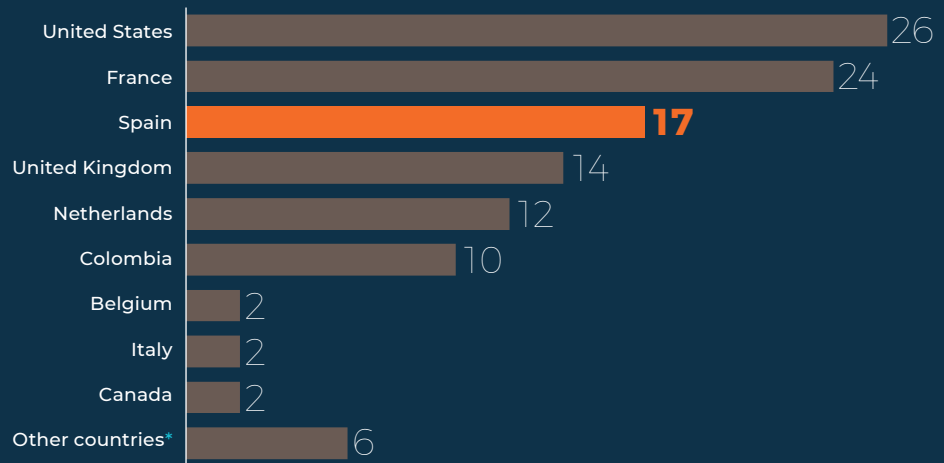
Evolution of the number of umbilical cord blood units available in Spain



799,770
units available in the world

64,638
cord units available

Distribution of shipments of umbilical cord blood units by destination country



* One umbilical cord blood unit was sent to each of the following countries: Germany, Australia, Greece, Denmark, Sweden and Hungary.

Compatible donor searches

1,460
compatible donors found
for Spanish patients in 2020

93%

Percentage of haematopoietic
progenitor donors found
within two months



786

pacientes españoles para los cuales se ha localizado uno o
more compatible donors were found in 2020.

1,034

donor search activations for Spanish patients in 2020.

For the first time, we exceeded 1,000 searches in one year;
the figure increased by 6% compared to 2019.



Transplants for Spanish patients in 2020



842
requests received
10% rise in 2020



501
products received
(58 from requests received in 2019)



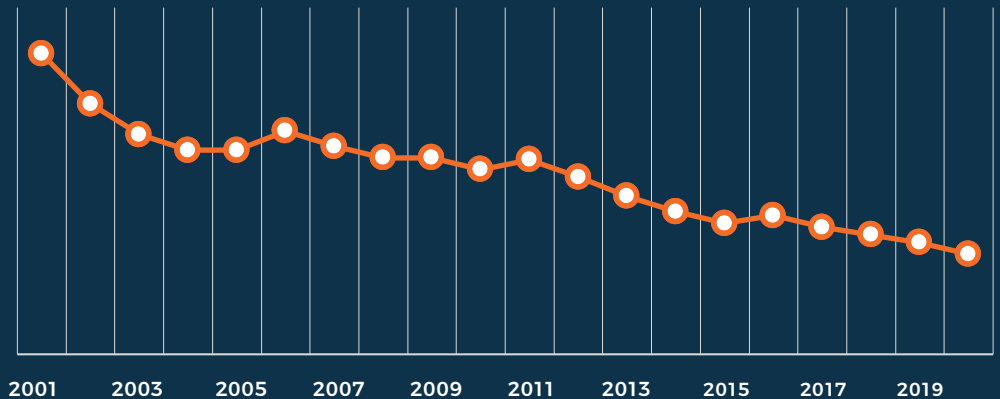
348
cancelled before extraction
(including postponed processes and 21 requests received in 2019)



73
collections under way as of 21/12/2020

26

Average number of days taken to search for bone marrow or peripheral blood



(*) The time taken to find donors during the pandemic cannot be compared to previous years, since the time required to confirm a donor's availability by means of an HAC is shorter than the time required to obtain, send and study confirmatory samples.



20

products awaiting
infusión

Reasons

Scheduled for January 2021 (1 lymphocyte)	8
Progression of underlying disease (1 lymphocyte)	7
Pending clinical course (2 lymphocytes + 1 boost)	3
Comorbidity	2



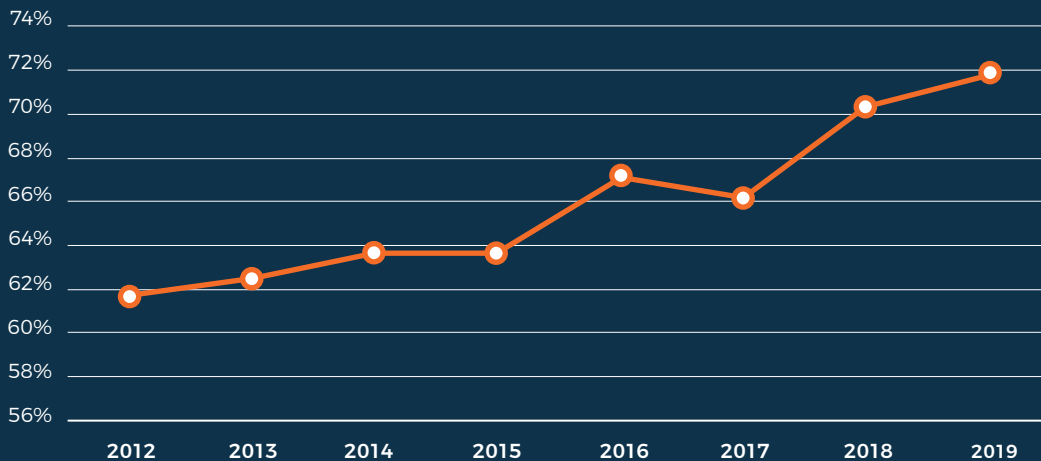
11

products that will
not be infused

Reasons

Patient deceased	4
Donor with COVID-19	2
Product with low post-thaw viability	2
Inability to reduce anti-HLA antibodies	1
Patient decision	1
Patient characterization error	1

Survival one year after the haematopoietic progenitor, bone marrow or peripheral blood transplant in malignant diseases (n = 2.872)





The work of couriers

**In 2020, we received cells from 26 different countries,
and the furthest away came from Honolulu!**

To transport haematopoietic progenitors, we were supported by companies specializing in such products (NOPC, Ontime and time:matters). If we were to draw a straight line from these countries to Spain, for all products received, you'd see that they had travelled **over 1,000,000 km!** But we can assure you that they didn't travel in a straight line, especially at a time when finding flights was impossible and cancellations were a daily occurrence. Our couriers travelled by train, car, bus or plane to get the haematopoietic progenitors to us as quickly as possible.

Thank you!

REDMO. REDMO's global activity

In the last 29 years, **10,999 trasplants** have been performed across the world thanks to anonymous donors found by the Josep Carreras Foundation's Bone Marrow Donors Registry.

(*) **BM:** bone marrow
PB: peripheral blood
BOOST: CD34+
UCB: umbilical cord blood
LYM: lymphocytes.



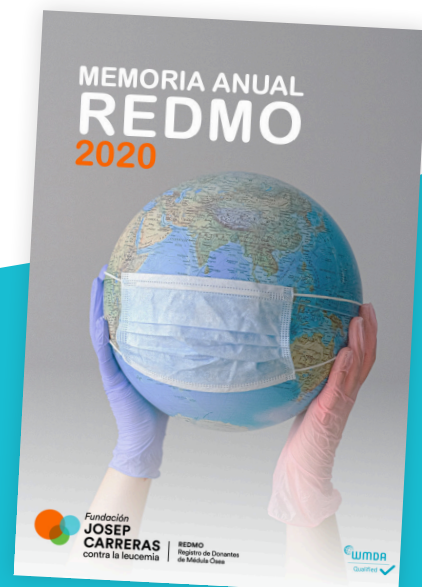
DONORS BM / PB / BOOST / UCB / LYM*



PATIENTS

	Spaniards	Foreigners	Total
Spaniards	1,600	5,936	7,535
Foreigners	3,463		3,463
Total	5,063	5,936	10,999

To read REDMO's full annual report, go to
www.fcarreras.org/en/memorias



Patient guidance



the last six years, more than **15,000 requests** for information or social guidance have been addressed.

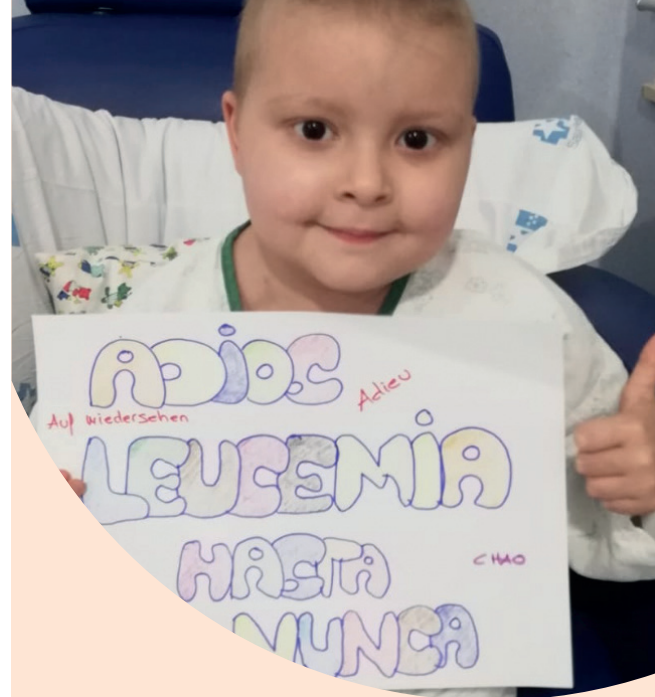
As happened with Meri and Lucía, the global COVID-19 pandemic has led to significant delays in new diagnoses and treatments, and a considerable upheaval for cancer patients.

Apart from the medical aspects, the extreme isolation and heavy restrictions stemming from the pandemic have also caused patients to suffer due to extreme loneliness, a lack of psychological and social care, and a shortage of entertainment, a particularly important aspect for children.

Patients with blood cancers such as leukaemia have been some of the hardest hit, since the immunosuppression levels among these patients are very high.

At the end of the year, in October 2020, the Spanish Society of Haematology and Haemotherapy (SEHH) presented the first results of ECOVIDEHE, a retrospective study on the effects of COVID-19 in haematology patients that benefited from the participation of 19 Spanish centres.

The conclusion: “The data available suggest that COVID-19 affects haematology patients more severely, especially those with blood cancers.”



Meri's four-year-old daughter was diagnosed with leukaemia.

“My name is Meri and I'm from Madrid. 2020 was an awful year for everyone. But for me, it was like something out of a science fiction film... Let me give you the short version:

From January to mid-March: everything was pretty normal. I changed jobs and felt motivated.

From mid-March to the end of the month: chaos! A global pandemic.

From 1 April to 14 December: my worst nightmare came true. My four-year-old daughter was diagnosed with leukaemia.

From 15 December: the best news ever. My daughter, Lucía*, could undergo a treatment that was experimental just four years ago.”

**Unfortunately, Lucía relapsed after CAR-T immunotherapy treatment and is in the process of undergoing other experimental treatments.*



All of this has caused huge concern for patients.

In 2020, the Josep Carreras Foundation attended to **1,521 online medical consultations** and a further **4,334 requests for information and/or social guidance**. This represented a 48% increase in all consultations from Spanish patients with respect to 2019.

The Josep Carreras Foundation offers patients an online medical consultation channel to answer all questions about blood disorders. This service is directed by Dr. Enric Carreras, a renowned haematologist, medical director of the Foundation and director of the Bone Marrow Donors Registry. In addition, our social media presence means that many people approach the Foundation to request more information or guidance on haematological malignancies and other reasons. To publicize our work and answer these information requests, the Foundation has staff who are dedicated to monitoring and attending to the requests received through these channels and by telephone.

Marco, the child with the unwavering smile.

“With this disease, you live minute to minute. Each minute is different from the last, whether better or worse. My son was diagnosed with leukaemia in 2019. In 2020, he relapsed and needed a bone marrow transplant.

He wasn't allowed to have his family with him or his parents together. Because of COVID, we could only stay with him in hospital one at a time; we were never allowed to be with him at the same time.

Whoever stayed with him had to cope with everything alone. But the other parent was forced to stay away, without being able to see him, without being able to make sense of what was happening, with a feeling of complete helplessness. It was so frustrating.

Throughout the year we spent month after month in isolation in different hospitals. No volunteers, no activities, no visits.

So switching on our mobile phones and reading all the uplifting messages sent through the Foundation gave us that much-needed affection, which gave us strength. It radiated from the screen.

THANKS a million for everything you do, even though words are not enough to thank you for all the good you do.”

Mari Ángeles, Marco's* mum.

* Marco underwent a stem cell transplant with cells from a donor located by the Foundation. He always fought with a smile on his face and endless strength. Sadly, he earned his angel wings on 10 February.



You're not alone

In 2020, a platform was created to send messages of encouragement to patients experiencing leukaemia, lymphoma and other blood cancers. **This online platform had been used to send more than 10,000 messages by the end of the year.**

Those wishing to send an uplifting message to patients can do so at www.fcarreras.org/es/juntosenesto



OTHER MANUALS OR DOCUMENTS FOR PATIENTS

Throughout the year, other guidance and support materials have been created for patients. These include:

Cancer and becoming a parent

A 14-page online manual that explains in clear, simple terms that patients with leukaemia and other cancers can become sterile and what options are currently available to help preserve fertility or have a child.

With the collaboration of Dr. Dolors Manau, Head of the Assisted Human Reproduction Unit at Hospital Clínic.

www.fcarreras.org/padecer-un-cancer-de-la-sangre-y-ser-mama-o-papa_1324308.pdf

When lymphoma attacks the skin: cutaneous lymphomas (Mycosis fungoides and Sézary disease)

A 13-page online manual that uses clear and simple terms to explain what Mycosis fungoides and Sézary disease are, how they affect patients and what treatment options are currently available. With the collaboration of Dr.

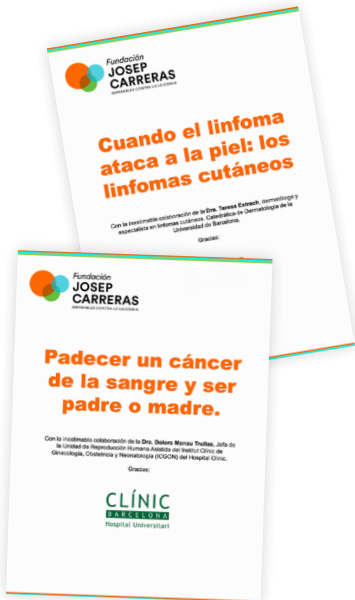
Teresa Estrach, dermatologist and cutaneous lymphoma specialist, and Professor of Dermatology at the University of Barcelona.

www.fcarreras.org/manuallinfomascutaneos

Materials for the 2020 virtual Leukaemia Awareness Week

Throughout the whole week, which ran from 21 to 28 June, a different theme was addressed each day: leukaemia and diet, bone marrow transplants, leukaemia and children, leukaemia and innovation, pain, leukaemia and teenagers, and leukaemia and fertility...

All materials are available from www.fcarreras.org/SCL2020



Welfare flats



In 2020, we accommodated **48 families**, who spent a total of **1,504 days in our flats.**

The creation of a network of welfare flats stemmed from the Josep Carreras Foundation's special concern for the well-being of patients and their families during treatment. Since 1994, we have had six welfare flats available for patients (and their families) with limited financial resources.

People undergoing treatment are often required to spend long periods away from home. Our flats are located very close to the Barcelona's leading hospitals in the field of malignant blood diseases.

Moreover, since 2012, the Foundation has also had a room available for patients and their families in the NH Porta de Barcelona hotel, thanks to a collaboration agreement between Sant Joan de Déu Children's Hospital in Barcelona and the NH Hotel Group.



Testimony of Mario, a lymphoma patient from Asturias who stayed in the flat in Bellvitge, and his partner Laura.

"I'd recently arrived in Barcelona when the pandemic hit and we went into lockdown in March. A clinical trial had just started and we were staying in a welfare flat belonging to the Foundation. Fortunately, the treatment barely had any side effects and our lockdown experience was similar to that of other families and within the new "normal". We took the opportunity to read books, have film sessions with popcorn and organize virtual meetups. We even tried our hand at baking, which we weren't too bad at.

From a more personal point of view, family support was essential to getting through that time. The pandemic also had a positive side for me and my partner, since her company allowed her to work from home due to the health crisis, so we were able to spend the lockdown and subsequent months together.

Summer came and with it the best news we could have wished for: I was ready for a transplant. Due to the pandemic, I had to spend many days in isolation with very restricted visits. But thanks to the Foundation's flat, my family and I always had the peace of mind of being close to the hospital."

Lugar de residencia de los pacientes acogidos en nuestros pisos



Between 1994 and December 2020, **450 families** stayed in our flats.

The UNSTOPPABLE community



Campaigns. Leukaemia Awareness Week in virtual format



In 2020, much like the previous eight years, we planned to celebrate the **Day of the UNSTOPPABLES on 20 June**, to mark European Leukaemia Awareness Week.



All content is available on the website:
www.fcarreras.org/SCL2020

In early February, we began to organize one of our most

special days of the year. Few days make us as happy as this one, when we get to spend time with all of you, the UNSTOPPABLES! For the ninth year running, patients, former patients, relatives, friends, doctors and researchers took to the streets to raise awareness about leukaemia and other malignant blood diseases and to stress the importance of continuing to carry out research so that one day these diseases will be 100% curable, every single time.

However, in light of the health crisis caused by the COVID-19 pandemic that has swept across the world, we were forced to make the decision to postpone the event.

But we were keen to do something, so we created the virtual version of Leukaemia Awareness Week.

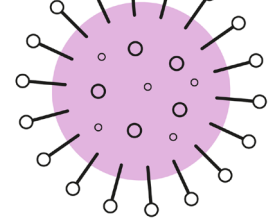
The agenda for the week included plans to discuss different aspects of leukaemia in an attempt to highlight specific issues that worry patients, thereby emphasizing the psychological and social side of the disease.

The week was organized as follows:

- 21/06** Leukaemia & nutrition
- 22/06** Leukaemia & bone marrow transplants
- 23/06** Leukaemia & children
- 24/06** Leukaemia & innovation
- 25/06** Pain
- 26/06** Leukaemia & teenagers
- 27/06** Leukaemia & fertility
- 28/06** Thanks!



More unstoppable than ever



#moreUNSTOPPABLEthanever

Charitable initiatives and support from individuals and companies made it possible **to raise more than €600,000**, which was allocated to two COVID-19 research initiatives coordinated by Dr. Manel Esteller, director of the Josep Carreras Leukaemia Research Institute.

The Josep Carreras Foundation launched the campaign “More Unstoppable Than Ever” in April 2020 through the website www.imparables.org with the aim of raising funds for a new line of research into COVID-19 and immunosuppression to be conducted at the Josep Carreras Leukaemia Research Institute.

Many patients with leukaemia and other malignant blood diseases are at a high risk of infections such as COVID-19. In light of the health crisis, the Josep Carreras Institute wanted to leverage its experience to address COVID-19 in all types of patients.

1. Identify the factors causing susceptibility to infection from SARS-CoV-19 and the determining factors for the clinical evolutions of COVID-19



Compare cell lines with different viral entry efficiencies.



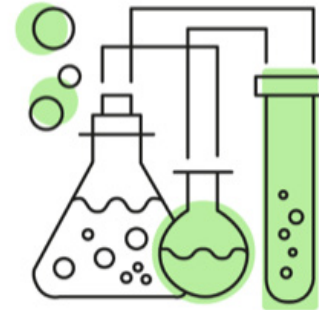
Compare tissues with different tropism for SARS-CoV-2 infection.



Compare populations with different clinical evolutions and susceptibilities to infection.



2. Develop a rapid test to detect SARS-CoV-2 based on nanocytometry.



>>> One of these projects aims to **identify the factors that make people more susceptible to infection by SARS-CoV-2 and the factors determining the clinical progress of COVID-19.**

To differentiate the molecular profiles, Dr. Esteller's group will focus on three sample types: human cells grown in the laboratory with different levels of viral entry efficiency, human tissues with different degrees of attraction to infection by SARS-CoV-2 and, lastly, samples of population groups that represent the two extremes in terms of COVID-19 symptoms: on the one

hand, children and older people; and, on the other, asymptomatic patients and patients with severe symptoms.

Once the bioinformatics analyses to identify variants of susceptibility to SARS-CoV-2 have been carried out, the second phase will commence; this will involve analysing samples from COVID-19 patients who are asymptomatic or have mild symptoms and samples from COVID-19 patients with severe or life-threatening symptoms.

These analyses are designed to confirm the results obtained and **to validate potential prognostic stratification biomarkers in COVID-19, which will help improve the clinical management of patients infected with SARS-CoV-2.**

>>> The other initiative run by the Josep Carreras Institute will focus on **developing a quick SARS-CoV-2 detection test based on cell analysis.** In this regard, the Josep Carreras Institute has extensive experience in the development of functional assays using primary cells from patients.



This knowledge, which it has acquired through the study of leukaemia and other malignant blood diseases, could prove hugely valuable for studying other diseases such as COVID-19. The Josep Carreras Institute, in collaboration with other institutions, **intends to analyse the reactivity of a series of candidate antibodies,** in light of scientific publications on COVID-19. In this regard, it seeks to study the reduction in lymphocytes, adverse cytokine expression and the role of the oxygen deficiency observed in COVID-19 patients in red blood cell function, and to analyse the association between COVID-19 and the risk of disseminated infection in the bloodstream.

The results of this research will have a positive impact on the health of the population in general, including the Josep Carreras Foundation and Institute's priority: **the health of children and adults with leukaemia and malignant blood diseases,** who are especially vulnerable to this disease.

Our online community in 2020

Social networks

255,035

people who liked our Facebook page
www.facebook.com/fundacioncarreras

19,666 more than in 2019 **(+8.4%)**



93,285

followers on Instagram
[@imparablescontralaleucemia](https://www.instagram.com/imparablescontralaleucemia)

39,173 more than in 2019 **(+72.4%)**



14,579

followers on our official Twitter feed
www.twitter.com/fcarreras

541 new followers **(+3.9%)**



4,640

subscribers to our YouTube channel
www.youtube.com/fundacionjcarreras

1,080 new followers in 2020 **(+30%)**



A few reminders of what happened online in 2020:

We launched live broadcasts on Instagram at the Josep Carreras Foundation!

Live broadcast with **Esther** (@mienfermerafavorita) and Dr. Juliana Villa, our deputy medical director, on bone marrow donation:

40,793

views

www.instagram.com/tv/CB_jI18Clzu/

Live broadcast with **Dani Rovira** (huge media hype) for World Lymphoma Awareness Day (15 September):

18,853

views

www.instagram.com/tv/CFKgFVNqrSY/

Live broadcast with **Marc Armengol**, one of our researchers at the Leukaemia Research Institute, who has also been an effective bone marrow donor:

10,317

views

www.instagram.com/tv/CFUGAUQK4qL/

The first virtual Leukaemia Awareness Week turned out to be a huge success!

289

posts on all our social networks

Weekly reach of almost **one and a half million people on Facebook and Instagram.**

Live broadcasts with unstoppable guests: patients, nutritionists, researchers, etc. All available at

www.fcarreras.org/SCL2020

100

patient *rebirthdays*

celebrated on our social networks in 2020; we heard the stories of more than 200

UNSTOPPABLES and nearly 50 bone marrow donors. We shared more than **140 articles on**

research and relevant information for patients and their families.

Our website

Our website in 2020

3,020,137

sessions

517,234 more than lthe previous year (+20.6%)



2,534,676

users

564,740 more than in 2019
(+28.7%)

Our media presence in 2020



429

press mentions



1,600

digital media mentions

Our members and friends

Our members



€12,759,069

raised in payments and donations from our regular collaborators



105,170

active members



9,798

new members

Our friends



€271,177

raised in contributions from one-off collaborators



15,970

friends



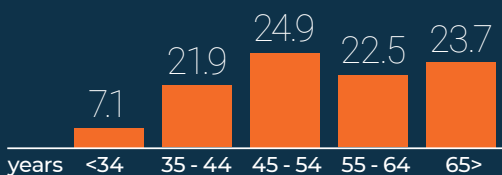
1,632

new friends

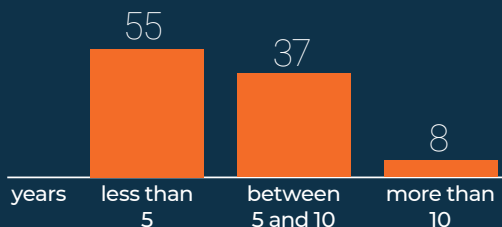
Behind the numbers

Profile of our members

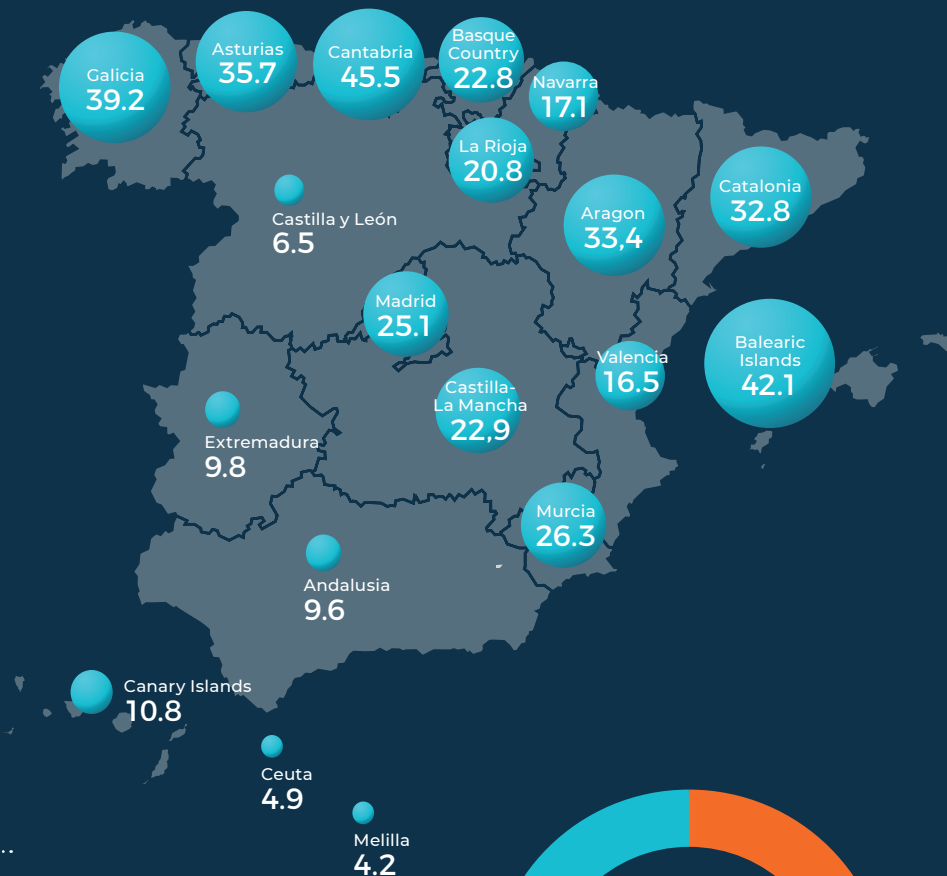
Distribution by age (%)



Distribution by longevity (%)



Penetration rate by autonomous community (members/10,000 inhabitants)

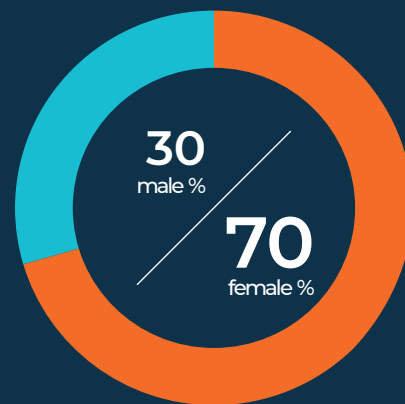


Most common contribution



€120

a year in monthly payments



Check the tax relief on your contribution at fcarreras.org/calculadora-fiscal.

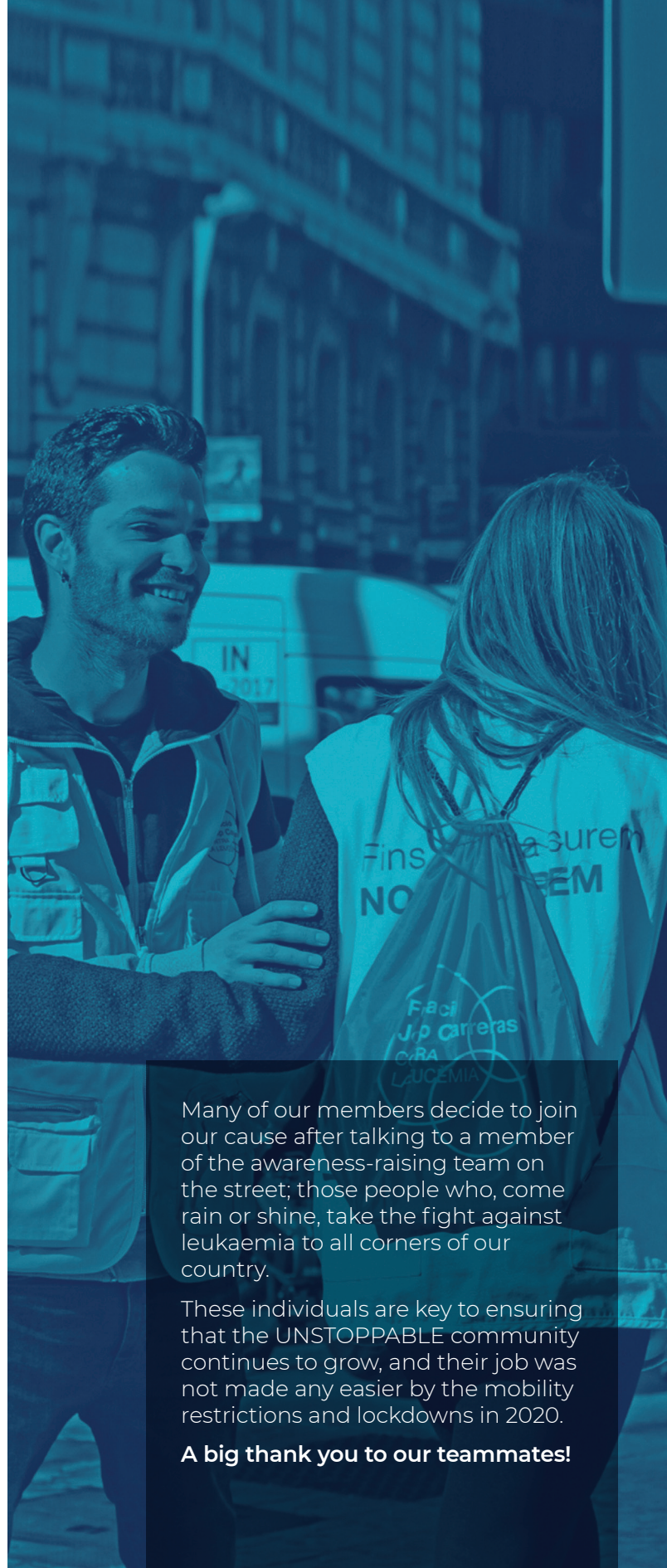
If you would like to change your payment, call us free on 900323334 or write to us at socios@fcarreras.es



Donations from our members and friends represent the Foundation's main source of income.

And our social base, like so many other things, has been affected by coronavirus. With our awareness campaigns at a standstill, the challenge faced by our members was twofold: the social and financial uncertainty that affected our donors was compounded by the need to find new fundraising methods to keep our fight going.

Despite everything, we welcomed more than **11,400 new members and friends** in 2020, and our existing collaborators have been more loyal than ever. To those of you who decided to join the fight against leukaemia in 2020 and to those of you who stuck around despite the challenges, we'd like to say a huge **THANK YOU!**



Many of our members decide to join our cause after talking to a member of the awareness-raising team on the street; those people who, come rain or shine, take the fight against leukaemia to all corners of our country.

These individuals are key to ensuring that the UNSTOPPABLE community continues to grow, and their job was not made any easier by the mobility restrictions and lockdowns in 2020.

A big thank you to our teammates!

Testimonials

The numbers make us strong, but the stories behind them make us even stronger.

Here we put faces to the people who have decided to stick by us in the most difficult of circumstances. Diego and Justyna, who joined our fight in April, at the height of the pandemic, explain why they chose our cause at such a turbulent time.



2020 was, without question, one of the hardest years of our lives. Like so many people, I was temporarily laid off. My situation hasn't changed, but this hasn't prevented me from helping those most in need and those who lack the most important thing in life: their health.

Together with my husband, I support various aid projects, animal shelters and also research. We feel it's essential, especially at such a challenging time. We're well aware that many people and companies are unable to do their bit financially during these uncertain times. We hope we can always support you!

Justyna, Madrid.



Thanks to the Foundation's research and progress, my family and I were able to celebrate my father's fifth "rebirthday".

I decided to become a member of the Josep Carreras Foundation during lockdown, right at the beginning of the pandemic. I could have made the decision at another time, since I'd wanted to collaborate for ages, to give back just a little of what my family and I have been given.

The first photo shows my father and me in July 2015, when he was isolated following his bone marrow transplant, for which I was lucky enough to be the donor. In the other photo, we're celebrating his fifth "rebirthday", joyful at having defeated this tough disease.

I hope that my modest contribution as a member will one day help all families suffering from this awful illness to cherish similar photos for many years to come.

Diego, Ávila.

The member team from within: member retention

Behind every email, call and letter received by our members and friends is the member retention team. Their goal? To ensure that our collaborators are kept informed of our activities and learn firsthand about the Foundation's programmes, our research advances and the most emotional stories of the unstoppable against Leukaemia.

A little piece of us goes into every message we send to our members and friends and every campaign we launch. Everything we have achieved so far is down to them, so words are not enough to convey what every contribution means to us, no matter how small it may seem.

We experienced 2020 together, with fear and uncertainty; we improvised and adapted our communication to get even closer to our members and friends. In return, they showed us their commitment and loyalty. Together we embodied the UNSTOPPABLE spirit, and together we will succeed in ending leukaemia and all malignant blood diseases. Until that day comes, we'll continue to share all our achievements, which also belong to you. Thank you to our members and friends!

Mireia Bel & Vanessa Iglesias.

Charitable inheritances and bequests

The energy, enthusiasm and will to fight leukaemia in life can continue afterwards through charitable inheritances and bequests. Thanks to all the charitable people who left inheritances for the Josep Carreras Foundation in 2020, we raised



€1,417,516

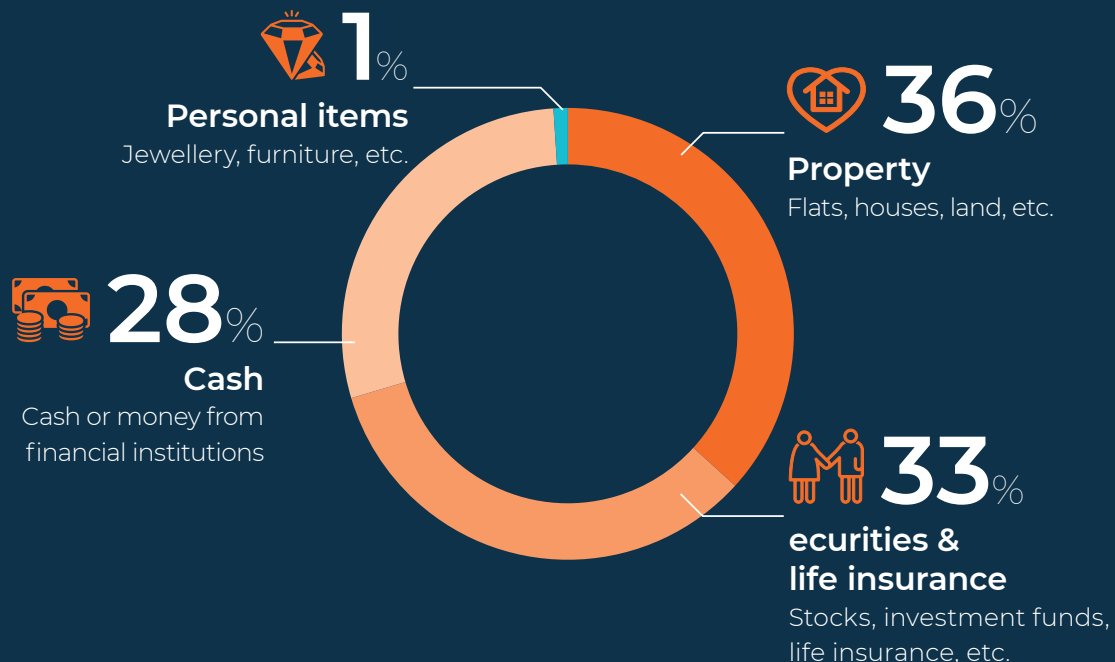
all of which will be dedicated to our projects



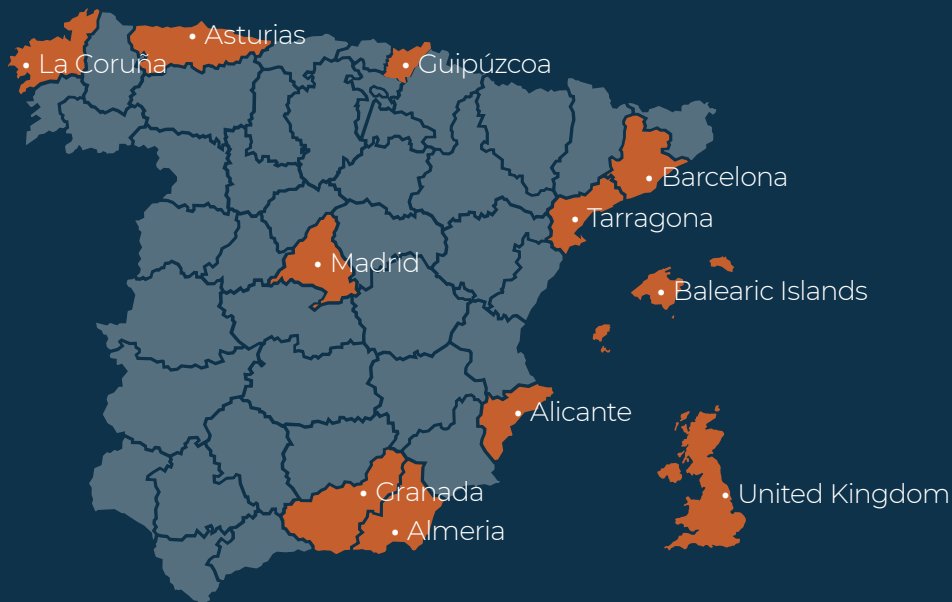
22

inheritances and
bequests handled

Assets inherited in 2020



Origin of the inheritances and bequests handled



There are different ways to include a non-profit organization in a will, depending on the circumstances:



Leave a bequest. This consists of bequeathing a specific asset (property, jewellery, a sum of money, etc.).



Leave assets to more than one person or institution. You can name the Josep Carreras Foundation as a **joint inheritor** by specifying the percentage to be allocated in the will.



If there are no heirs, you can appoint the José Carreras Foundation as **universal inheritor**.

If you would like more information about charitable inheritances and bequests, please contact **Albertina Grau:** herencias@fcarreras.es

Supporting companies

Collaboration models

- Charitable initiatives by companies
- Prospecting companies
- Sponsorships
- Product transfer or collaboration in kind
- Variable contributions
- Calls for proposals or projects
- Unstoppable companies
- Corporate Member Plan
- Media partners: dissemination in awareness campaigns

Territorial penetration

*Listed from highest to lowest presence in the autonomous communities.

- | | |
|------------------------|-----------------------|
| 1. Catalonia | 9. La Rioja |
| 2. Madrid | 10. Extremadura |
| 3. Valencian Community | 11. Castilla and León |
| 4. Andalusia | 12. Castile-La Mancha |
| 5. Basque Country | 13. Murcia |
| 6. Cantabria | 14. Balearic Islands |
| 7. Asturias | 15. Navarre |
| 8. Canary Islands | |

Business sectors

*Listed from highest to lowest impact

- Food
- Technology
- Business foundations
- Pharmaceuticals
- Logistics
- Marketing and communication
- Leisure and recreation
- Financial and legal advisory and consultancy services
- Non-profit organizations
- Large retail establishments
- Energy
- Textiles
- Automotive



€576,914

total raised



566

total number of corporations
in the Foundation's database



+180

companies contacted
in 2020

102

no. companies and
organizations that have
collaborated in 2020

Testimonials



La Colección Gráfica

“Collaborating year after year with foundations such as the Josep Carreras Foundation is an honour for La Colección Gráfica, as we know that diseases like leukaemia require support and research to find a cure and to care for the families affected by them.

Every year, our team works on a collection of Christmas cards and gifts for companies to help in the fight against leukaemia, in addition to the group’s other objectives.

We consider ourselves to be a committed company that focuses on the following goals:

- 99.9% of the paper used in our workshop is recycled.
- 100% of the consumables used in the printing process are recycled.
- Our machines are CO₂ certified.
- We create charity stationery collections.
- We redistribute food to combat waste.

We are proud to have been supporting the Foundation for eight years, alongside our clients, by donating 15% of our sales. We therefore consider our relationship with the Josep Carreras Foundation to be another cog in the machine that ensures our commitment is a genuine, long-term one.”

Raúl Cano, Manager

Variable annual contributions



Grupo Nolla

Il Caffé di Francesco, Café Novell

“For us, participating in the various campaigns run by the Josep Carreras Foundation is about recognizing the tireless efforts of everyone who is fighting this tough disease every day and giving hope to all the families whose fight against it is unwavering. It’s a way of showing everyone who visits our establishments that even the smallest of gestures can make an immense difference. Huge thanks to the volunteers who help make this adventure a more comfortable path, full of hope and enthusiasm for everyone.”

Santiago Lozano

Variable annual contributions



NOVARTIS

“Cancer is one of our biggest challenges as a society. And one thing’s for sure: the biggest challenges cannot be overcome alone. For this reason, everyone involved in health must continue joining efforts and working collaboratively to improve people’s quality of life. At Novartis, our mission is to reimagine medicine, and

we're convinced that we can achieve this through joint initiatives, such as those carried out with the Josep Carreras Foundation to respond to the needs of people with cancer and offer them tools to help and guide them throughout the disease process. Hopefully this will help us get closer to making the dream of a cure for cancer a reality."

Esther Espinosa, Director of Communication and Patient Relations at Novartis Oncology

Sponsoring company



Urbinium

"For the fifth year running, we have renewed our commitment to the Josep Carreras Foundation in the fight against leukaemia through the Corporate Member Plan. This partnership is our way of doing our bit for scientific research to cure leukaemia and other malignant blood diseases.

At Urbinium we are proud to have established a long-term, lasting relationship with the Josep Carreras Foundation. For our entire team, it's so valuable to know that some of our profits are being used for research into leukaemia, a cause that requires all resources available to us.

Urbinium's project is characterized by social values and a firm social commitment. We are aware of the impact of our actions on society and the environment, so it is essential to get involved in research projects that help improve the lives of many families. It is crucial to ensure that our actions always make a positive difference to our environment.

At Urbinium we are aware of the importance of being linked to this entity and of being involved in the tireless fight against leukaemia. We want to play our part in the goal of one day making leukaemia a curable disease in each and every case. Our contribution consists of an alliance of shared values and a guaranteed commitment to solidarity and life.

For yet another year, and hopefully for many years to come, part of our profits will be earmarked for this cause. We're joining forces with the Foundation, because we will be more unstoppable than ever in 2021!!

Corporate Member Plan



WÜRTH

"Our collaboration with the Josep Carreras Foundation since 2005 has become a vital factor for Würth España and all its employees, and forms part of the DNA of the people who make up Würth.

The Josep Carreras Foundation shares values with Würth España, including commitment, social responsibility and solidarity. Without these values, the organizations could not work together as they do, year after year.

We wholeheartedly wish to continue working alongside the Foundation, to do our bit and to fight towards common goals such as defeating leukaemia."

Ignacio Roger, CEO and spokesperson for Würth España

Sponsoring company



Megacall, Phoenix Solutions

“Cancer can affect any one of us, and we still have a great deal to learn. That’s why foundations such as the Josep Carreras Foundation make a difference. Here at Megacall, we believe that we have a duty to give back to society, because Spain has given us so much; me, since I arrived in the country in 1987 and the company since its creation in 2008. We are proud to give the Foundation visibility in the hope that it encourages other companies to do the same, so that together we can help make great strides in cancer research.”

Anthony Kauffer, CEO of Megacall

Corporate Member Plan



NACEX

“Since the very beginning, we have actively collaborated with a number of non-profit organizations on initiatives related to medical research to improve health. We are committed to strategic collaborations that can be developed in the long term to create a greater impact on society.”

Arianne Muñoz de Wolf, Marketing Director

Corporate Member Plan



Numbers.

Quick facts and key figures



102

no. of companies and organizations that have collaborated in 2020



566

total number of legal entities in the Foundation's database



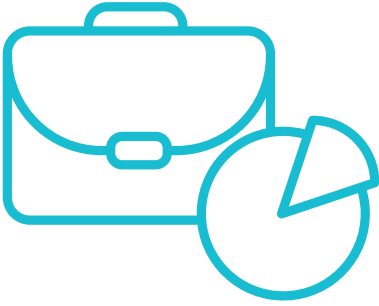
+180

companies contacted in 2020

Percentage by type of collaboration



* The rest is from new charity events promoted by companies that have carried out charitable initiatives or channelled through "Mi Grano de Arena"



We want to thank the companies and organizations that have supported us in 2020.

This includes the companies that have joined and those that have remained loyal in their collaboration in the fight against leukaemia. Your support is a partnership of shared values; a commitment to solidarity that allows us to carry out our work.

THANKS to everyone!

Companies that have collaborated on our awareness-raising campaign:



For more information, please contact the Corporate Partnerships Department:

93 414 55 66; empresas@fcarreras.es

Corporate Member Plan:



ALUMINIOS SECADES
ALZAMORA
CAFF
CENTRAL DE CATERING SERVICATERING
CONSUM
ERRA
FRESCO SYSTEM
FRUTOS SECOS IBIZA
FUNDACIÓN SUSANA MONSMA
FUNDICIONES Y SISTEMAS AVANZADOS
GAIA COMMERCIIUM
GEDESCO
INGECAL
INGENIEROS EMETRES
JOSE SALCEDO SORIA
LAMBERTS
LERRASA HIDRÁULICA
MON PIRINEU
ON TECNIA
PAVIMARSA
PILGRIM REST PROJECT
PINOS DEL RASO
PLAGUES ESSER VIU
UNAS 1
URBINIUM
VELLERINO SDI
VILASECA
VITOGAS ESPAÑA
VOE



ENAGAS
ABET
FUNDACIÓN SANTOCAN JUNGUEL



AUXADI
AYUDAS TECNO DINÁMICAS
COMMON MANAGEMENT SOLUTIONS
GUARRO CASAS
KERNPHARMA
MAY COURIER
VIVE ENERGÍA

Companies that made variable contributions in 2020

A PÉREZ ALBIÑANA C.B.
ABET, S.L.
ALLIANZ COMPAÑIA DE SEGUROS Y REASEGUROS, S.A.
ALOUCO, S.L.
ALPHA SIGHTS
ALUMINIOS SECADES, S.L.
ALZAMORA PACKAGING, S.A.
ANTCORPS, S.L.
ASOCIACIÓN GAIA COMMERCIMUM
ASOCIACIÓN SOLIDARIA ACAYE
AUTOGALLEY PREMIUM, S.L.
AUXADI CONTABLES & CONSULTORES, S.A.
AYUDAS TECNO DINÁMICAS, S.L.
BECRISA 2011, S.L.
BEPRINT 2016 S.L.
BODEGAS MAURO, S.A.
BONPREU
CAFeworld, S.L.
CAFF, S.L.
CARAT ESPAÑA, S.A.
CEETRUS URBAN PLAYER
CENTRAL DE CATERING SERVICATERING, S.L.
CINK VENTURING, S.L.
COMMON MANAGEMENT SOLUTIONS, S.L.
CONSOFT, S.A.U.
CONSUM, S.C. VALENCIANA
COSTAS Y RAMILO, S.L.
DELL
DEUTSCHE MASCHINEN, S.L.
DUCHAFLEX SYSTEMS, S.L.
ENAGÁS, S.A.
ENTRENA CON AINHOA, S.L.
ERRA TECNI RAM, S.L.
ESCLAT
ESTUDIOS DE MERCADO PRISMA, S.L.
EUSKALTEL, S.A.
EV SANT JUST, S.L.
FRESCO SYSTEM ESPAÑA, S.A.
FRIMANCHA CANARIAS S.L.U.
FRUTOS SECOS IBIZA, S.L.
FUNDACIÓN ADEY
FUNDACIÓN ALTRÁN PARA LA INNOVACIÓN
FUNDACIÓN CANARIA SATOCAN JÚNGUEL SANJUÁN
FUNDACIÓN LEO MESSI
FUNDACIÓN SUSANA MONSMA
FUNDACIÓN TEAMING
FUNDACIÓN VINCI ESPAÑA
FUNDACIONES Y SISTEMAS AVANZADOS, S.L.
GEDESCO, S.A.
GRUPO INDUKERN, S.L.
GUARRO CASAS, S.A.
HARRY BROKERS, S.L.
HOUSE STANDING, S.L.
INGECAL, S.L.
INGENIEROS EMETRES, S.L.
INVERSIONES INDUSTRIALES SERPIS, S.L.
INVEST. GROUP INVESTIGACIÓN DE MERCADOS, S.L.
JAIME YLLA Y ALIBERCH, S.A.
JOSE SALCEDO SORIA, S.L.
LA COLECCIÓN GRÁFICA
LAMBERTS ESPAÑOLA, S.L.
LERRASA HIDRÁULICA, S.A.
LEUKEMIA FOUNDATION JCFC-J CARRERAS FAN CLUB JAPAN
LUZ SOLIDARIA, S.L.
MAC ASESORES Y CONSULTORES INTEGRALES
MAY COURIER MADRID, S.L.
MERCADO BIOMASA, S.L.U.
MON PIRINEU, S.L.U.
MULTICANAL IBERIA S.L.
NOVARTIS FARMACÉUTICA, S.A.
ON LEVEL QUALITY, S.L.
ONTECNIA MEDIA NETWORKS, S.L.
ORANGE ESPAGNE, S.A.
OXIFILM, S.L.
PAVIMARSA, S.A.
PHOENIX SOLUTIONS, S.L.
PILGRIM REST PROJECT, S.L.
PINOS DEL RASO, S.L.
PLAGUES ESSER VIU
PRIS ENTERTAINMENT, S.L.
PUNTO FA, S.L.
SANTI I PAQUI PERRUQUERES, S.L.
STARBOX SPECIAL PACKAGING, S.L.
SYSMEX ESPAÑA, S.L.
TANDEM PROJECTS, S.L.
TELEFÓNICA MÓVILES ESPAÑA, S.A.
UK ONLINE GIVING FOUNDATION
UNAS 1
URBINIUM, S.L.
VELLERINO SDI, S.L.
VILASECA, S.A.
VIS A VISIÓN
VITOGAS ESPAÑA, S.A.
VIVE ENERGÍA ELÉCTRICA, S.A.
VODAFONE ESPAÑA, S.A.
VOE, S.A.
WHADS ACCENT, S.L.
WORLDCCO, S.L.
WÜRTH ESPAÑA, S.A.
XFERA MÓVILES, S.A.U.

Charitable initiatives

 **€215,757.67**
total raised

 **285**
activities organised

 **€1,828.45**
average donation

^47.64%
increase in volume due to
wedding requests

∨63.53%
decrease in the volume
raised compared
to the previous year,
due to COVID-19

€100
average donation

Types of initiative

Recurrent:

- Weddings
- Product sales
- Celebrations
- Artistic events
- Sporting events

Others:

- Facebook birthdays
- Challenges in “Mi Grano de Arena”
- Company activities
- School events
- Gastronomic events
- Annual Activity Report

Forms of contact:

- Portal de Bodas.net
- Email
- Telephone
- Social Media

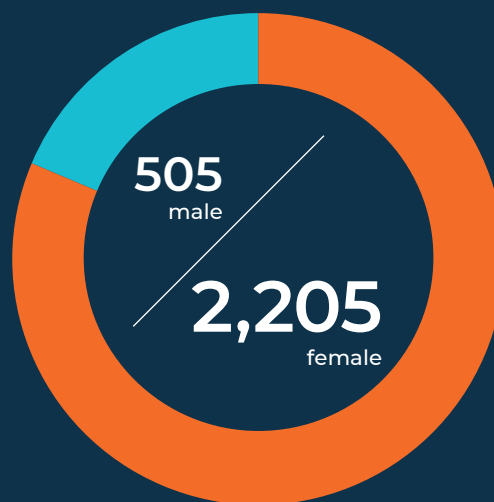
 **104**
in-person initiatives

 **17**
initiatives during lockdown
(March - May)

Top 10 provinces with most initiatives:



Profile of promoters



Testimonials



SPORTING EVENTS

ANDRÉS PASCUAL

Five charity marathons in five days

“Running five marathons in five days in aid of the fight against leukaemia was so rewarding. I wanted to achieve this sporting challenge as a boost for my sister-in-law Carmen, who was undergoing treatment for leukaemia, and for all the unstoppable ones who are fighting this battle. I received loads of support wherever I went, and we managed to raise 10,000 euros for the research projects carried out by the Josep Carreras Foundation. Sadly, we lost Carmen a few months later, but this initiative made her very happy and she was so proud.”



MEMORIALS

MÁXIMO CUEVAS, GAMMER

FIFA charity live stream on Twitch

“Despite lockdown, I wanted to do a FIFA charity live stream on Twitch in memory of my great friend Javi,

who died of leukaemia, and use the opportunity to raise funds for the Josep Carreras Foundation. Javi was an amazing person.

He was one of those people you need by your side all the time and who make it all worthwhile. The 3,700 euros we managed to raise were a tribute to him and to all the people who have fought, are fighting and will one day fight this serious illness. Hopefully the day will come when no one else has to lose a loved one to something like this.”



SCHOOL EVENTS

MARÍA ALONSO, IES SAN JUAN BOSCO

Charitable workshops at break time

“At IES San Juan Bosco in Lorca, Murcia, we rolled up our sleeves in the fight against leukaemia thanks to our Charity Break Time programme, an unstoppable teacher and students willing to reveal their most supportive and committed side. Teachers and students came together as one team and used break time to create charity crafts that allowed the rest of the school community to do their bit by exchanging them for donations, which were allocated to two lines of research carried out by the Josep Carreras Foundation. Little by little, the mood spread throughout the whole school and an atmosphere of unity and awareness emerged. This allowed us to raise some money, which was really significant, especially because of the impact it had on the students in knowing that they were helping others. We will continue to be unstoppable!”



WEDDINGS

MIRIAM & JAVIER

Charitable wedding

“Ever since we decided to get married, we knew we wanted a charitable wedding. Doing our bit in the fight against leukaemia, lymphoma, myeloma and other forms of blood cancer brought us huge satisfaction. The guests were delighted, and we owed it all to an amazing fighter, my sister, to the Foundation for always supporting and helping her, and to everyone who is suffering from this disease, so that one day we might find a cure together.”



We handled **2,284 requests** for charitable weddings.



CELEBRATIONS

LILIAN GOBERNA

Charitable “rebirthday”

“On 9 August, I celebrated my 10th “rebirthday” after being diagnosed with acute promyelocytic leukaemia in 2010. My sister Lucía spent a year organizing a surprise party, and not even a pandemic was going to stop me having the most wonderful, emotional party of my life, surrounded by all my loved ones. It was an

intimate celebration, and everyone welcomed me with the orange balloons and ribbons of the Josep Carreras Foundation, of which I have been a member for 10 years. There were moments when we remembered how tough the disease had been, the chemotherapy and the consequences, but also moments when we appreciated how happy I am 10 years later.”



ARTISTIC EVENTS

SANDRA SALCEDO, TOUT COLOR

Charity drawing

“When the Foundation asked me to create a charity drawing, I wanted to represent part of ourselves in it, by giving colour and shape to the love that keeps flourishing and sustaining itself. I could not have imagined what would come next: the people who lent a hand to help us flourish even more, who collaborated without a second thought, who told me incredible stories, who shared their emotions... It was simply magical to feel that, even at such a challenging time, we could still bring some brightness to the world, thanks to everyone. With the charity print I designed for Mother’s Day, we managed to raise almost 1,000 euros to benefit research into COVID-19, leukaemia and immunosuppression.”



SALES

MIREN URTAZA

Tantanka Project

“At 26 years old, I was diagnosed with Hodgkin lymphoma. After finishing chemotherapy, I felt the need to give something back so I created the Tantanka Project (‘drop by drop’ in Basque) with my friends. We designed the ‘No rain, no flowers’ t-shirts, with a drawing that used flowers to represent the part of the lymphatic system where I had the disease. The project also included handmade toiletry bags by Ta Punttu. Through the sale of these charity products, we managed to raise more than 4,550 euros, which was allocated to the research lines carried out by Dr. Tomás Navarro and Dr. María Berdasco at the Josep Carreras Leukaemia Research Institute.”



COMPANIES

PALOMA DE BLAS

Unstoppable trader

“As a company, Camilo de Blas has always been involved in social causes, but its collaboration with the Josep Carreras Foundation is its first experience of supporting scientific research. We collaborate by selling chocolate cookies called ‘camilines’ in our bakeries, with all proceeds going to the Foundation.”

We started out by selling them in our shops, but now we’ve expanded to include events such as weddings and baptisms, and it’s going really well. The response from everyone has been wonderful, and sometimes patients have even come by to thank us in person. It’s lovely to be able to do our bit for this cause.”



GASTRONOMIC EVENTS

JAVIER JIMÉNEZ, BAR KIKI

Charity meal

“Here at Bar Kiki, we got involved in Childhood Cancer Day with a charity meal that opened everyone’s eyes. We prepared a fine-dining meal so that everyone could enjoy a fantastic evening and, at the same time, do their bit in the fight against leukaemia. This activity allowed us to raise 2,450 euros, which went directly to research into childhood leukaemia. It was a very emotional day for the whole team, especially for my family and my little unstoppable, who is always showing us that he is an example to be followed.”

Buyers of our charity products: our charity shop

The Foundation has an online **charity shop** where you can purchase value-added products. The profits from each sale go to our scientific research projects.



We offer:

- Shipment tracking.
- Shipping in 24-28 hours.
- Payment by card or cash on delivery.
- Personalized customer service.
- Money-back guarantee.



Buyer profile

77.8% of buyers are female, 27.33% are between 25 and 34 years of age, and 22.26% are between 35 and 44.



Devices used to visit our shop

65.39% mobile phone 2.69% tablet 31.92% computer



5,241
products sold



675
sales made

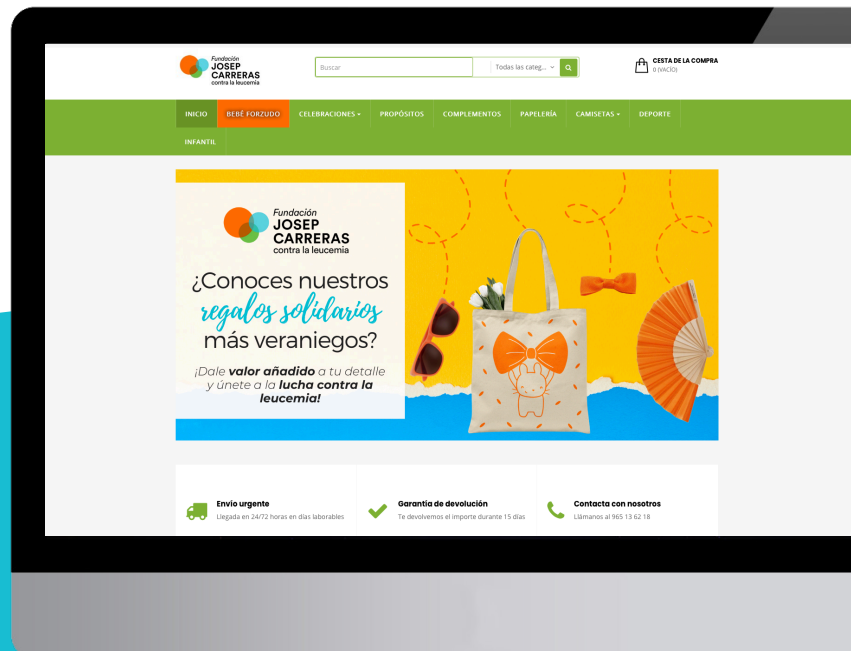
Origin of our buyers:



Thanks to everyone who has made a charity purchase!

You can buy our charity products at:

www.tiendafcarreras.org





Josep Carreras
Leukaemia Foundation
Muntaner 383, 2º
08021 - Barcelona
Tel. 93 414 55 66
info@fcarreras.es

www.fcarreras.org